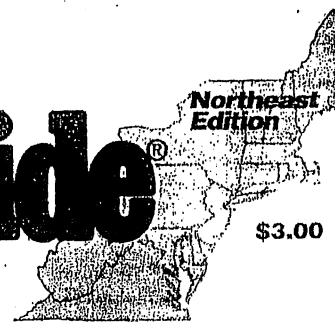


Construction Equipment Guide

January 2
2001
Vol. XLIV • No. 1

470 Maryland Drive • Ft. Washington, PA 19034 • 215/885-2900 • Toll Free 800-523-2200
• Fax 215/885-2910 • www.ConstructionEquipmentGuide.com

"The Nation's Best Read Construction Newspaper... Founded 1957."



DEFOE CONSTRUCTION EQUIPMENT GUIDE
800-523-2200
MOUNT VERNON, NY
10550-5019



DeFoe workers add cross member in widening a structure on the Bruckner/Cross Bronx Expressway Interchange Rehabilitation Project.

DeFoe Shatters Incentive Ceiling on Colossal NYC Thoroughfare Job

By James C. Van Horn
CEG CORRESPONDENT

Due to savvy deployment of equipment and precise project sequencing, DeFoe Corp., Mount Vernon, NY, has so far maxed out on its incentive completion bonuses on a \$200 million-plus highway rehab job.

DeFoe is the general contractor for the Bruckner/Cross Bronx Expressway Interchange Rehabilitation Project in

the Bronx, NY, for the New York State Department of Transportation (NYSDOT). This project covers major portions of the Bruckner Expressway (I-878), the Cross Bronx Expressway, the New England Thruway (I-95), the Hutchinson River Parkway and the expressways to the Whitestone and Throgs Neck bridges.

Scope of work on the job, originally let at \$242 million,

see BRUCKNER page 120

Supreme Court Dismisses DBE Legal Challenge

By Tracy Carbasho
CEG CORRESPONDENT

A 12-year legal battle initiated by a Colorado guardrail construction company came to a close recently, but will be remembered as a landmark civil rights case.

Adarand Constructors Inc., a family-owned guardrail, and fence contractor based in Colorado Springs, first

The federal government's practice of racial bid-rigging has caused [Adarand] to lose 60 to 100 jobs that could have brought in between \$3 million and \$6 million in revenue.

Randy Pech
Adarand Constructors Inc.

challenged the U.S. Department of Transportation's Disadvantaged Business Enterprise (DBE) program in 1990. Adarand President Randy Pech said the federal government's practice of racial bid-rigging has caused his company to lose 60 to 100 jobs that could have brought in between \$3 million and \$6 million in revenue.

Neither Pech nor his legal counsel were surprised when the U.S. Supreme Court decided on Nov. 27 to dismiss Adarand's challenge to the DOT's use of racial preferences in its contracting program.

see ADARAND page 116

ARTBA Rings in 2002 By Celebrating Its Centennial Birthday

By Pete Sigmund
CEG EDITORIAL CONSULTANT

One hundred years ago, Horatio "By Gum" Earle, president of a bicyclists' association called

the League of American Wheelmen, met with three other men in the Cadillac Hotel in New York City. They approved a constitution of an association of road builders that is today a major force in the transportation and

construction industry.

The constitution provided for a president and three vice presidents and created eastern, southern, central and western divisions. The annual membership fee was \$5. "This is not a cheap

affair and cheap members will not be tolerated," Earle wrote.

At the time of the Feb. 13, 1902, meeting, only 14,000 cars — which farmers dubbed the "red devils" — were registered in the United States. The country

included millions of bicycles. Both the early motorists and the cyclists were mired in mud, especially on country lanes.

The meeting founded the American Road Makers (ARM),

see ARTBA page 124

NY Contractor Races Through \$242M Rehabilitation Project

BRUCKNER from page 1

includes:

- Replacement of 1.1 million sq. ft. (102,193 sq m) of reinforced concrete deck on 14 multi-stringer steel structures;
- Repairing and resurfacing of 4 mi. (6.4 km) of on-grade roads;
- Replacement of bridge and overpass superstructures;
- New super- and sub-structures on three spans on the Cross-Bronx;
- Installation of an intelligent traffic system (ITS);
- Maintenance and protection of traffic.

Providing construction coordination and management services, including inspection, to NYS-DOT are HAKS Engineers PC, New York City.

The project, according to NYSDOT, was planned so that it combines several projects into one, thereby reducing time and impact on the surrounding communities and motorists.

Also, the timeline on the project aims to minimize the effect on the communities and motorists. As Bob Colella, general superintendent of the Bruckner project of DeFoe, explained, "This contract has 16 incentive/disincentive milestones in it, in terms of completion of each phase. If we finish ahead of the scheduled milestone date, we get a bonus, depending on how much ahead we are, to a maximum amount. If we finish on time, we get the contracted amount. If we get behind, we are penalized for each late day. So far we have achieved the maximum allowable bonus for each milestone."

Completion of this job, which started in June 1999, was originally set for May 2003, but DeFoe is at least 75 percent there already. On three previous segments of the mammoth project, DeFoe completed one in 50 percent of budgeted time, a second a year early, and a third 11 months ahead. On the final, and biggest roadway segment, the actual interchange of the Bruckner and Cross Bronx, anticipated completion has now moved up to November, 2002. However, Colella said they are aiming at finishing concrete work and having roads open by this coming winter, with final completion by May 2002.

"We are on track to finish ahead of schedule, and, even though there are extras added since the original award, there are also underruns. We will probably come in dollar-wise under the original award."

The original Bruckner Interchange, according to Colella,

was completed in 1971 and, at \$50 million (1970 dollars), was one of the most expensive and complex highway jobs built in the United States at the time. The Bruckner Interchange was built to 1960's steel structural standards and has suffered deterioration after 30 years of pounding traffic and proximity to the salt air of Long Island Sound may not have helped, either.

Colella said, "We are removing and replacing the concrete decks, reinforcing bearings to meet seismic loads, and widening certain areas on the viaducts for extra lanes, requiring new foundations and new columns."

"At the start of the project, DeFoe drove 1,000 new concrete-filled monotube friction piles to support new and rebuilt roadways. On the westbound Cross Bronx, they cut out 800 ft. (243 m) of steel and replaced steel cross hammerheads with concrete, and replaced and stiffened the long steel spans."

Continued Colella, "While some steel replacement is necessary, we can use many of the existing steel structures, rehabilitating and reinforcing them." The basic soundness of the Bruckner, he noted, testifies to good maintenance practices.

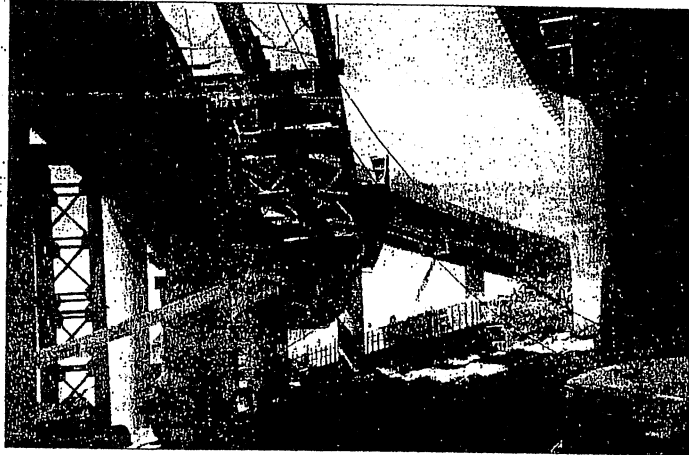
DeFoe also replaced and repaved on-grade roads on the Hutchinson River Expressway, the Cross Bronx and the approaches from the Whitestone and Throgs Neck bridges. Caterpillar and Komatsu hydraulic excavators handle excavation — or re-excitation — where necessary.

"One of the more interesting parts of the job was on the ramp that feeds the Bruckner Expressway from the Cross Bronx — we couldn't shut it down for the entire time it took to rehab it, six months, so we designed and built a temporary bridge to handle all the traffic while we redid the permanent structure. This temporary bridge had to connect two existing structures which vibrated independently of each other, so the connecting bridge actually 'bounced' two ways." The temporary bridge used four longitudinal steel beams topped with open steel grating, like that used on drawbridges, welded to them.

DeFoe makes extensive use of staged construction to keep traffic moving and make the best use of time and resources. On one stretch of elevated roadway, for example, Caterpillar and John Deere crawler and wheel excavators with hydraulic hammers chiseled out old roadway; crews torched away old steel plates and



A Caterpillar hydraulic backhoe removes old concrete paving and excavates subbase for a new approach ramp to the on-grade section of Bruckner/Cross Bronx Expressway Interchange Rehabilitation Project.



DeFoe workers adds cross member in widening a structure on the Bruckner/Cross Bronx Expressway Interchange Rehabilitation Project.



A Caterpillar wheeled backhoe with a hydraulic hammer breaks up old concrete deck on the Bruckner Interchange as a workman hoses down the impact point to reduce dust.

MAJOR EQUIPMENT LIQUIDATION AUCTION for AREA CONTRACTOR and USED INVENTORY REDUCTION for EASTERN EQUIPMENT SALES, INC. (Late Model Rental Return)

275 ROUTE 32, NORTH FRANKLIN, CT

NEW DATES

FRIDAY, JANUARY 25 & SATURDAY, JANUARY 26

UP TO 2001 MODEL YEAR CONSTRUCTION EQUIPMENT
 EXCAVATORS: CRAWLER TRACTORS & LOADERS: RUBBER TIRED LOADERS:
 TRACTOR LOADER BACKHOES: SKID STEERS: CRANES: SCREENING PLANTS &
 CRUSHERS: PAVING EQUIPMENT: COMPACTORS & ROLLERS: HAUL TRUCKS:
 TRENCHERS: FORKLIFTS: GENSETS & COMPRESSORS: FARM TRACTORS: TRUCK
 TRACTORS: DUMP TRUCKS: WALKING FLOOR, DROPSIDE, DETACH, DUMP BOX
 AND UTILITY TRAILERS: BUCKET & DIGGER DERRICK TRUCKS: UTILITY
 VEHICLES: FLEET VEHICLES: GRAPPLES & SHEARS: SUPPORT EQUIPMENT: AND
 MUCH MORE!

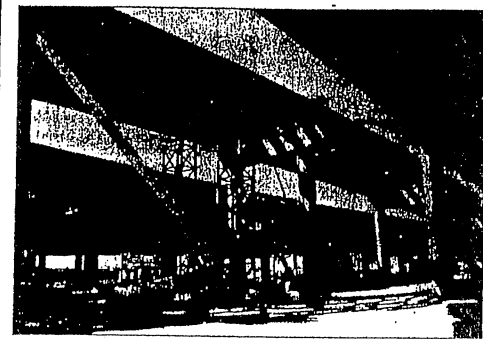
TERMS: Complete payment day of sale in Cash, Certified or Guaranteed Funds.

CALL FOR INFORMATION AND PICTURE BROCHURES. SALES MANAGED BY:
PETROWSKY AUCTIONEERS, INC.

275 Route 32, North Franklin, CT 06254, (860) 642-4200, Fax: (860) 642-7900
 Hartford, CT (860) 728-1600
 Philadelphia, PA (215) 440-3900
 Milford, NH (603) 672-4100
 Jacksonville, FL (904) 714-6860
 Providence, RI (401) 455-0200
 Boston, MA (617) 427-8888
www.petrowskyauctioneers.com

DeFoe Fast Tracks NYC Highway Jobs

BRUCKNER from page 120



Aerial lift equipment plays a major role in the rehabilitation of steel spans and installation of new concrete decks of the Bruckner/Cross Bronx Expressway Interchange Rehabilitation Project. Here, DeFoe workers finish up one span while another (foreground), has permanent metal concrete forms in place. DeFoe also makes extensive use of temporary steel tower supports.

rebars, other crews welded new cross-braces and steel replacement parts, while concrete crews follow, installing rebar and permanent metal concrete forms. Concrete pouring followed closely.

Colella explained they deploy lots of hydraulic lifting equipment. "This is a big Condor job — we have as many as 30 aerial lifts on the job. We also use cherry pickers and 35-ton hydraulic cranes."

The biggest cranes, however, were used to handle the new steel beams — 500-ton (450 t) capacity Krupp hydraulic truck cranes with 200 ft. (60 m) of booms, for precision work inside and between piers and girders.

Normally DeFoe works one shift a day, with 300 people on the job. They will work nights and weekends, straight through if necessary, when the project requires complete shut-down of a roadway, and go into overtime to hit an early completion date. Colella noted the bonus could be double the cost of additional labor.

Although DeFoe may not have as high a public profile as several other New York City area contractors, the firm has a long, solid history of public works contracting. Colella noted the company, which is privately held, specializes in bridge and highway rehabilitation work, so it's well-equipped for the Bruckner, one of the biggest highway rehab jobs in the northeast — and well-positioned to reap the benefits of finishing almost a year ahead of schedule."

Surplus SEaled Asset Sales BID SALE

BID DEADLINE: 3:00 PM THURSDAY, JANUARY 24, 2002

Montgomeryville, PA • Philadelphia, PA Elkon, VA • Cedar Rapids, IA
 Inspection Begins: Monday, January 21, 2002, 8:00 A.M. (At All Sites)

NOTICE: Merck & Co., Inc., Aventis Pharmaceuticals Products Inc., AstraZeneca Pharmaceuticals Inc., Schering-Plough Research Institute, Rohm And Haas Company, Merial Limited, Peco An Exelon Company, New York Power Authority, First Energy Corp., Reliant Energy, and others are selling items surplus to their current needs in Pennsylvania.

TERMS: Cash or Certified Funds. "As-Is, Where-Is" Surplus Asset Sales Co., Inc. reserves the right to reject any or all bids.

INSPECTION: Sale items may be inspected Monday, January 21 through Thursday, January 24, 2002, from 8:00 AM through 4:00 PM. (Except Thursday — only until 3:00 PM)

- MONTGOMERYVILLE, PA
 • FORD Diesel Tractor mdl. 1710, 4 cyl. with Bucket; FORD Diesel Tractor Loader Backhoe mdl. 1700, 4-cyl. with bucket; INTERNATIONAL Tractor mdl. 128 with 42" Mower Deck; SNAPPER Rider Mower; WOODS Finish Mower mdl. RN360 with 3 pt. Hitch; HUSTLER Front Mower mdl. 275, 25 hp Kohler Engine, 72" Mower Deck; (2) FORD WD Lawn Mowers mdl. 930A with 52" Mower Decks; CUSHMAN Diesel Lawn Mower with 60" Mower Deck; RACVAC 10 cu.ft. Leaf Vacuum mdl. CV580 with 5 hp Engine; (2) PTO Operated Fertilizer Spreaders; 1996 ADILLAC STS 4-Door Luxury Sedan, 8 cyl., Auto, Loaded; 1995 MERCEDES BENZ C280 4-Door Luxury Sedan, 6 y.l., Auto, Loaded; 1995 INFINITY Q45 4-Door Luxury Sedan, 6 cyl., Auto, Loaded; Contractors Tools, Hand Tools, Jump Starters, Hand Trucks, Packaging & Process Equipment, Tablet Presses, S/S Tanks, Pumps, Motors, Forklifts, Material Handling Equip., Electrical and Mechanical Supplies, Lab & Test Equip., Computers and Office Furniture.
- PHILADELPHIA, PA
 • VC Turning Center, Lathes; Plate Roll Bender; (3) Vert. Band Saws; Grinders; Overlay System; Abrasive Recovery System; Wood Joiner; Wood Lathe; 12" Table Saw; 24" Wood Planer; Drill Presses; Wood Working Equipment; Tire Late Model Screen Printing Shop; Computers and More!
- ELKTON, VA
 • Hitbone 25,000# Pull Cap. Dsl. R/T Rail Car Mover, Mdl. 250CM, s/n 145C; Howitt Robins Elec. RR Car Shaker; 3 Car Tugger; Coal Conveying Equipment; (2) Clark Elec. Pallet Jacks; 1978 Chevy Blazer, Rldgid 535 Threader; 1 Qty. Unused S/S Valves & Fittings 1/4"-12"; D/I Pipe & Fittings; Contractors Tools; 10,000 Gal. S/S Tank; Process Equipment; Pumps & Motors; Electrical Supplies; Computers; Office Furniture and More!

More Equipment And Material Being Added Daily To Our 60,000 sq. ft. Warehouse and Other Sites!!!
 For more information, detailed brochure or our on line brochure contact:
www.sas.net

Surplus Asset Sales
 201 Progress Drive
 Montgomeryville, PA 18936
 PHONE 800-727-0127 • FAX 215-661-9787
 WEB: www.sas.net

SECURED CREDITORS AUCTION

Logging & Const. Equip., Mobile Home, Automobiles
 Norwich, NY (Chenango County)

Tuesday January 15, 2002 11:30 AM

Auction to be held @ Wesco/NBT Impound Yard on East River Road. Take Rt. 12 to Rt. 23 east in Norwich. Go 1 mile to left onto East River Road. Go 100 yds to Wesco. Watch for Arrows.

Items Selling for Secured Creditors
 Timco T-425-B Feller/Buncher Machine, Self Propelled on Tracks, SN - AT4C843022796, (95-96 Vintage), 3175 hrs on meter, Full Cab w/ Air & Heat, Good U/C, Nice specialty Logging Machine! Refer to our Website for several pictures. (Selling for Small Bus. Adm. & NBT Bank)

Also Selling for NBT Bank N.A.
 • 1995 Champion 14'x70' 2 Bedroom Mobile Home in nice Cond.

• 1989 Jeep Grand Cherokee Laredo, 4 Door, 4WD, V8, nice cond.

• 1998 Dodge Stratus, 4DSD Car (Possibly other Rep Vehicles by Sale Time)

Also Selling Same Day / Same Place
 • Caterpillar D6C Crawler Dozer, 76A Series, Good U/C w/ Rear Scarifier, 4,000 orig. hours, nice original machine, former local municipally machine.

• Ford 4600 Diesel Utility Tractor, 52 HP w/ 3hp, nice.

For Pictures & more info on Auction and certain machines, refer to our website @ www.manasseauctions.com.

Auctioneers Note: A nice group of items here to be sold @ Auction. Be on time — Auction won't take long!

Terms — Cash, Good Check, or Major Credit Card w/ Positive ID. Out Of State Buyers need Bank Letter of Credit addressed to Mel Manasse & Son. Payment in full day of Auction. 3% Buyers Premium waived for payment in Cash or Check.

MEL MANASSE & SON
 Auctioneers & Sales Managers
 Whitney Point, NY
 607-692-4540 / 1-800-MANASSE
 Website: www.manasseauctions.com

Get the latest news online.
 Visit CEG's Web Site at
www.ConstructionEquipmentGuide.com